

# Vulnerable Populations

Sexually active people can get syphilis through vaginal, anal, or oral sex without a condom with a partner who has Syphilis. You should get tested regularly for syphilis if you are sexually active and

- are a man who has sex with men
- have HIV
- are taking pre-exposure prophylaxis (PrEP) for HIV prevention
- have partner(s) who have tested positive for syphilis.

# Prevention

The best way to completely avoid STIs is to not have vaginal, anal, or oral sex. If you are sexually active, the following things can lower your chances of getting Syphilis:

- Being in a long-term mutually monogamous relationship with a partner who has been tested and does not have gonorrhea.
- Using condoms the right way every time you have sex.

# Contact Us



(314) 657-1584



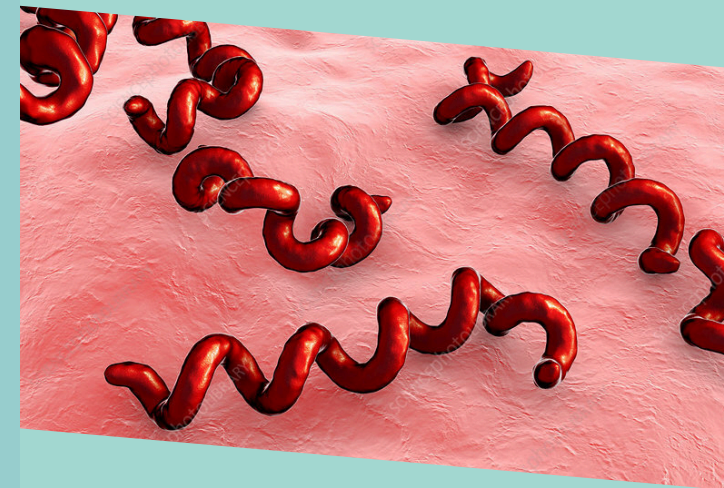
Health Stop STL  
Free STI Testing Clinic  
Mon-Thurs 9am-4pm  
Closed 12m-1pm for lunch  
[www.healthstopstl.com](http://www.healthstopstl.com)



For more info,  
visit [www.cdc.gov](http://www.cdc.gov)



# SYPHILIS



CITY OF ST. LOUIS  
DEPARTMENT OF HEALTH

INFORMATIONAL BROCHURE



# What is Syphilis?

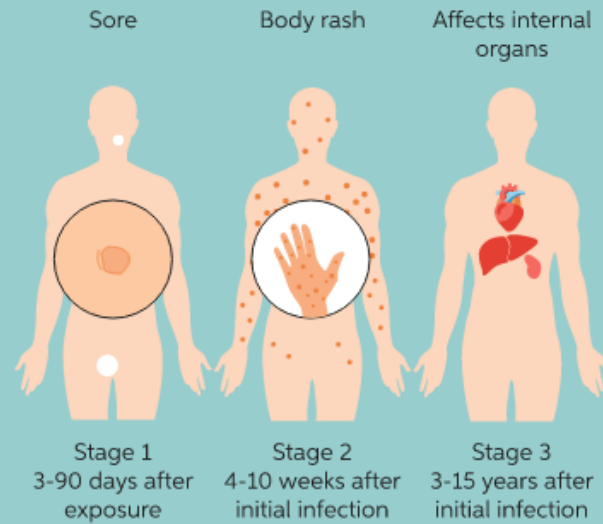
Syphilis is a sexually transmitted infection (STI) that can cause serious health problems without treatment. Infection develops in stages; primary, secondary, latent, and tertiary. Each stage can have different signs and symptoms.

## Transmission

You can get syphilis by direct contact with a syphilis sore during vaginal, anal, or oral sex. Syphilis can also spread from a mother with syphilis to her unborn baby.



### Stages of syphilis



## Stages & Symptoms of Syphilis

- **Primary:**
  - Single or multiple sores on penis, vagina, cervix, anus, rectum or mouth
    - Usually round, firm, and painless
  - Without treatment, sores will likely resolve on their own within 1-5 weeks, average of 3 weeks
- **Secondary:**
  - Skin rashes or sores in mouth, vagina, anus
    - Rash on palms of the hands or bottom of the feet that are rough, red, red/brown
    - Can last 2-6 weeks
  - Symptoms: flu-like symptoms; fever, swollen lymph glands, sore throat, fatigue, muscle aches, hair loss, headaches, weight loss
- **Latent:**
  - No longer infectious, expect for mother to baby
  - No signs or symptoms present, but damage to internal organs are occurring
  - Can appear up to 20 years after infection

## Treatment

- **Primary:** a single injection can cure primary syphilis
- **Secondary:** a single injection can cure secondary syphilis
- **Latent:** injection(s) of penicillin
  - Early latent (<12 months infection): one time single dose
  - Late latent (>12 months infection): 3 doses one injection a week for 3 weeks